

# TAINER ASSEMBLING CL-TN001S M,2 SATA SSD & Internal Battery



2024.3

## TAINER CL-TN001S M.2 SATA SSD

\* Preparation

1. TAINER
2. (+) Screw Driver

[Pic 1]

[Pic 2]



[Pic 1]

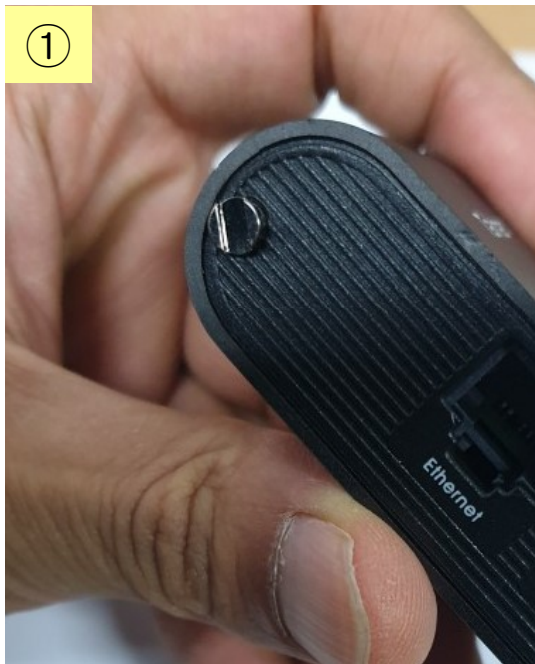


[Pic 2]

## 1. Remove WiFi Dongle & Silicon case

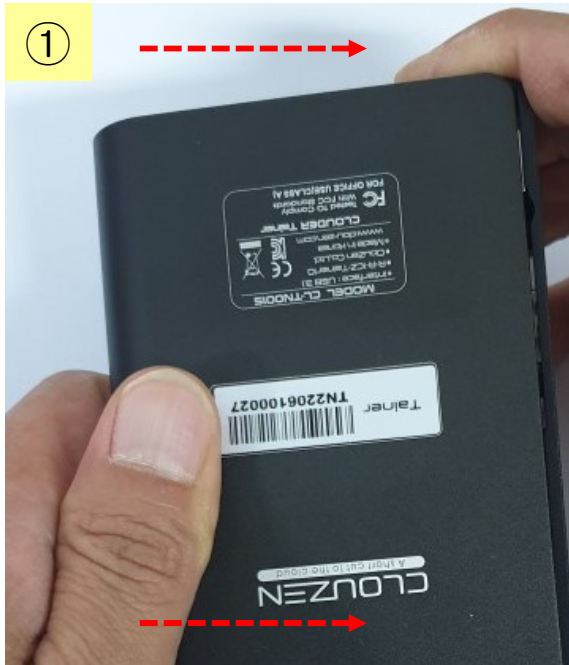


## 2. Remove Coin-Lock Screw



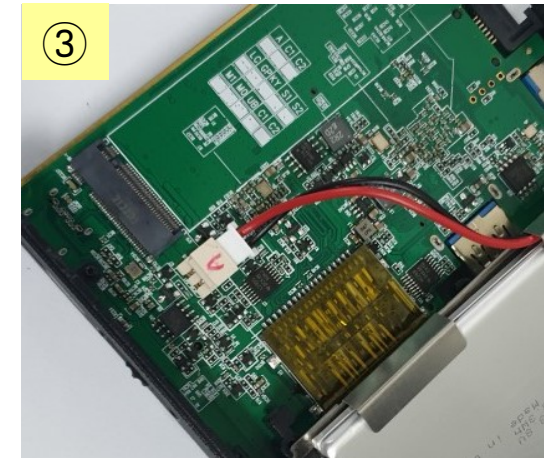
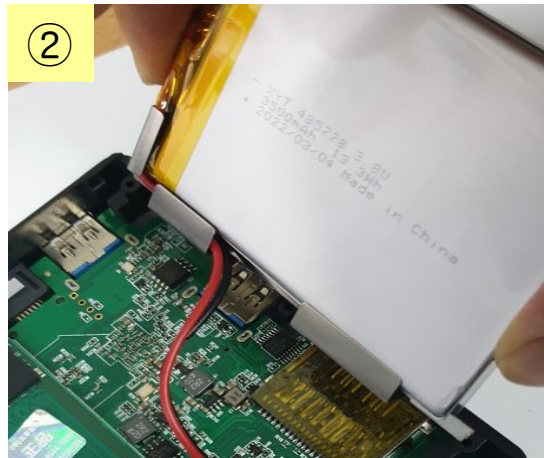
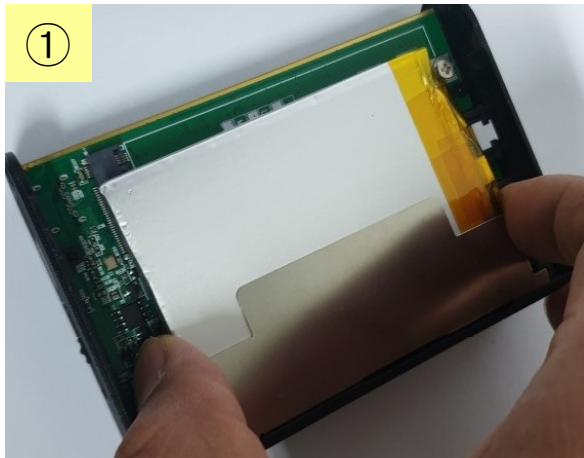
\*\* To remove the coin-lock screws on both sides of the main body, use a coin to loosen and remove them.

## 3. Remove Aluminum Case



- \* Prior to sliding out the aluminum case, it is important to hold the container with the back side facing up. By doing so, you can prevent the internal battery from accidentally dropping while sliding out the case.
- \*\* To remove the aluminum case, slide it out towards the side indicated by the arrow.

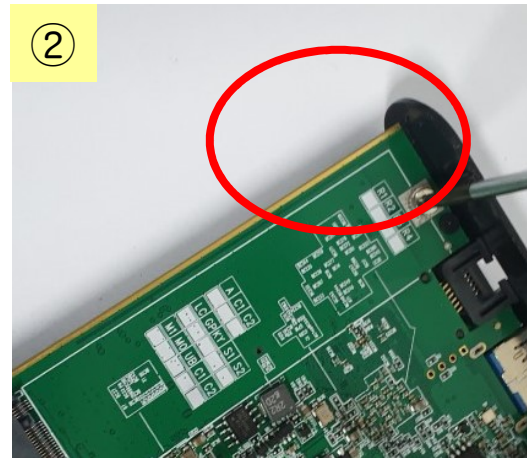
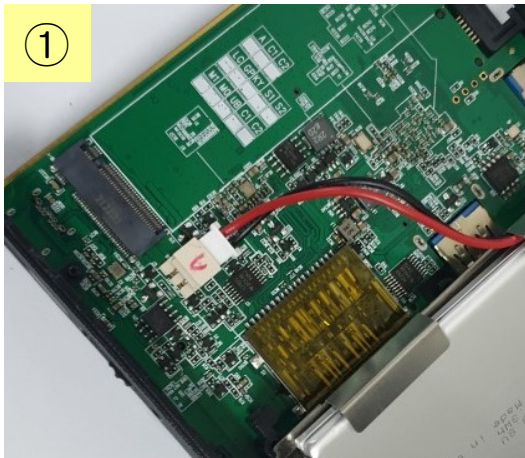
## 4. Remove Internal Battery



### •Caution:

During battery removal, ensure the stainless steel cover remains attached to the battery. The cover has sharp edges and is not permanently affixed to the battery. Detaching it may damage the soft Li-Poly battery casing, leading to battery failure. Handle with care to avoid injury and protect the battery.

## 5. Add M.2 SATA SSD



2) Unfasten the M.2 screw

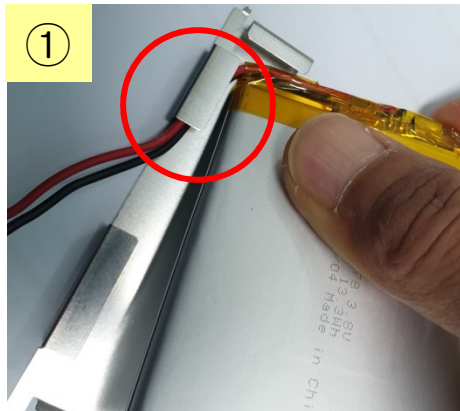


3) Slide in M2 2280 size SATA SSD

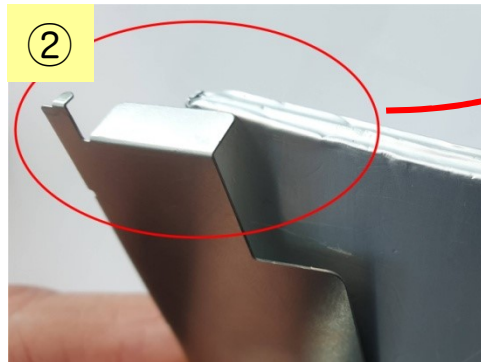


4) Fasten the M.2 screw

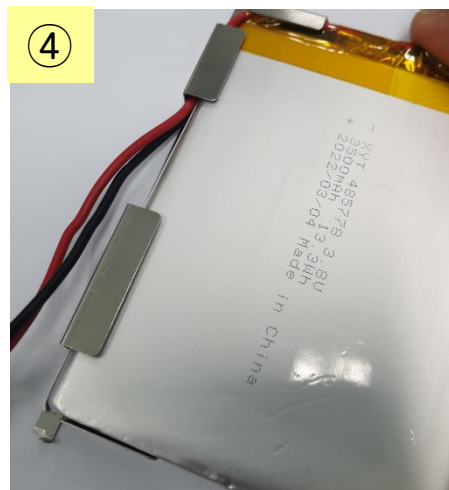
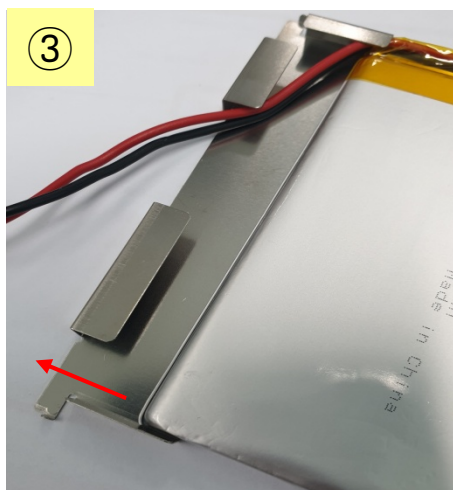
## 6. Cautionary Instructions for Battery and Cover Handling



Align the battery cable within the hard cover as illustrated.



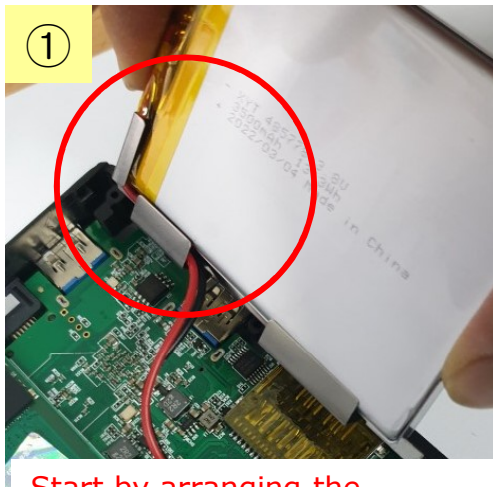
**Be careful on the sharp edge of the cover**



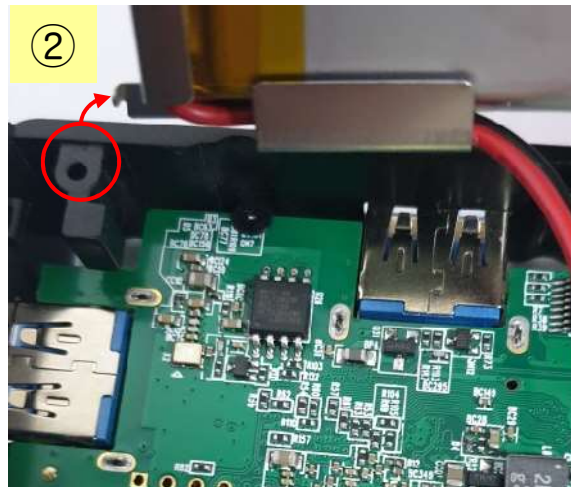
**\* Caution**  
Take care to prevent the hard cover's edges from damaging the battery during assembly.



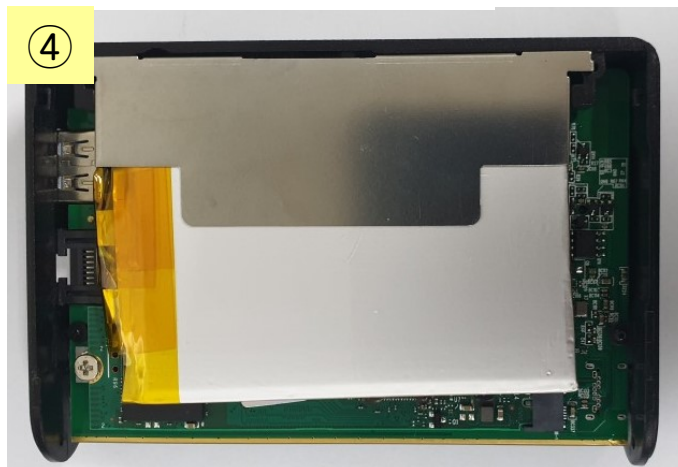
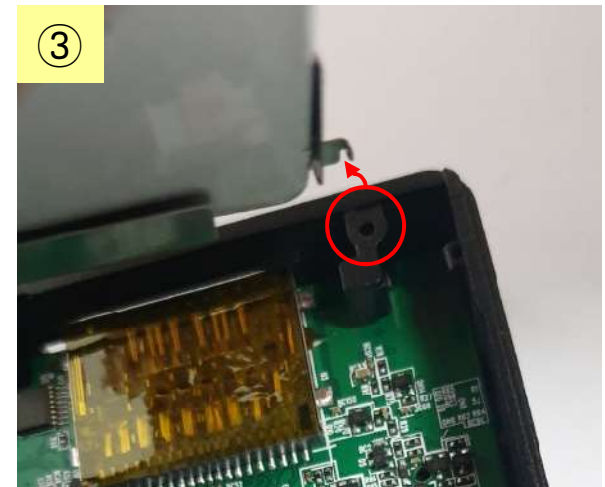
## 7. Assemble Battery



Start by arranging the battery cable as shown in the figure provided



Take note of the tiny hooks on the right and left edges of the metallic battery holder case. Ensure that these hooks are properly aligned with the corresponding holes on the body plastic case.

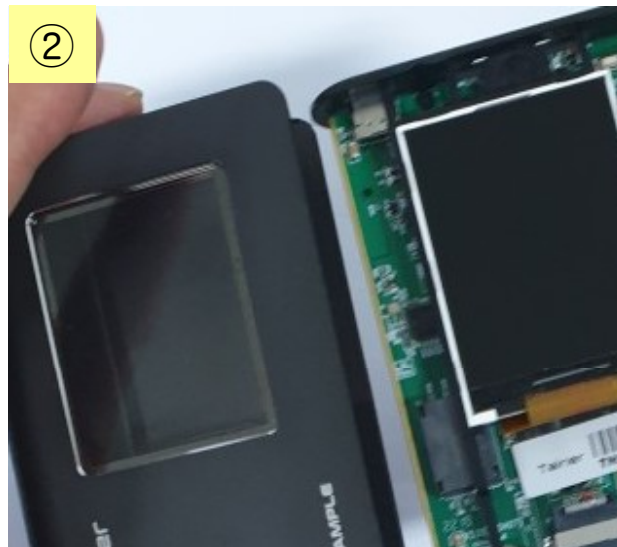


4) Carefully place the battery into the battery holder, ensuring a secure fit.

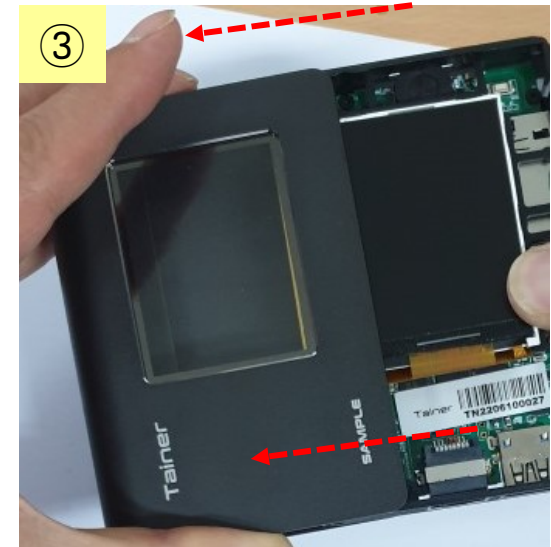
## 8. Assemble the Aluminum case - 1



1) Hold the case as shown above



2) Front side UP



3) Slide in the Aluminum case

## 8. Assemble the Aluminum case - 2



Fasten the coin-lock screw

**Do NOT fasten too tightly. Over-tightening may cause the screw to malfunction.**

## 9. Assemble Silicon case and WiFi Dongle



**The WiFi dongle MUST always be inserted into the USB Host port on the left side (USB2.0 Cloud Port)**

# THANK YOU

